

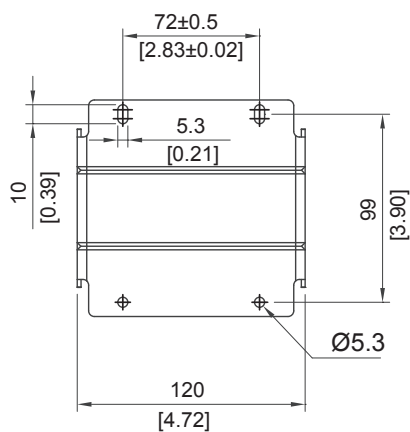
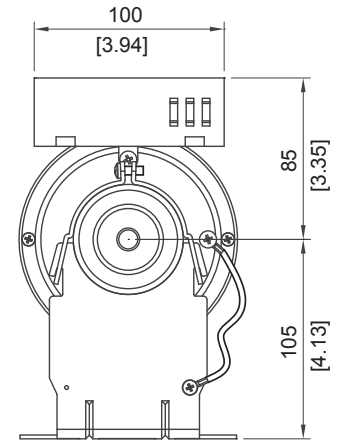
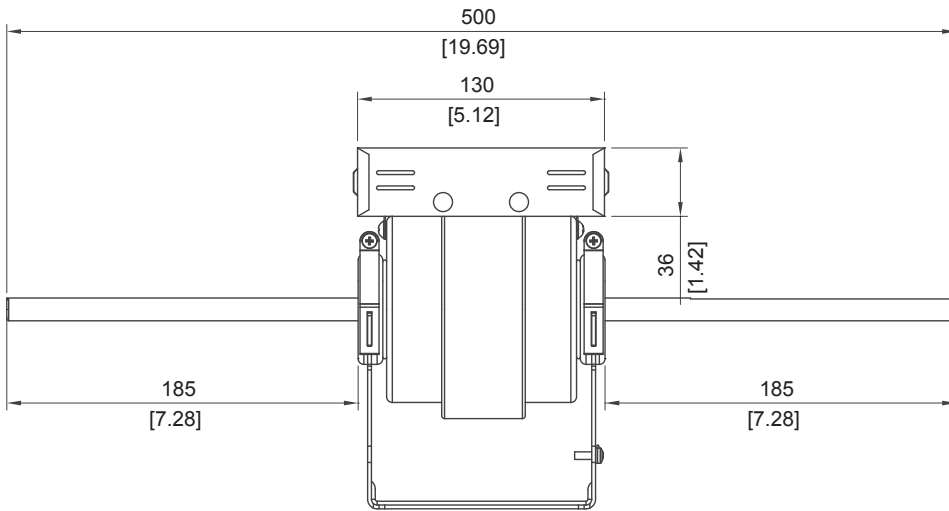
OPERATING TEMPERATURE -15°C to + 40°C  
 OPERATING HUMIDITY 5% to 85%  
 TORQUE RANGE 10-14 Kg-cm  
 INSULATION CLASS Level B  
 EFFICIENCY 75%  
 UNGROUNDED VOLTAGE <25 VAC  
 LEAKAGE GROUNDED CURRENT <5 mA  
 LEAKAGE CURRENT <5 mA  
 SHAFT Double shaft

# 500

mm

500 mm

## DIMENSION



UNIT:mm[inch]

## SPECIFICATION

MODEL NO.	RATED VOLTAGE (V)	FREQUENCY (Hz)	RATED CURRENT (A)	OUTPUT POWER (W)	SPEED (RPM)	cosθ
EM500105W120	100-240	47~63	<1.2	120	300~1400	>0.9
EM500105W180	100-240	47~63	<1.2	180	300~1400	>0.9